

LIFE RESIDENTIAL DISTRICT

Brescia, Italy

5+1AA
ALFONSO FEMIA, GIANLUCA PELUFFO

The "Life" neighbourhood lies just outside Brescia's city walls, interacting with the old centre through the balanced use of solids and voids to create new public spaces, walkways and urban elevations.

MARMI FAEDO

Via Monte Cimone, 13 - I - 36073 Cornedo (VI)
Tel. +39 0445 953081 - Fax +39 0445 952889
E-mail: info@marmifaedo.com - www.marmifaedo.com



The design by 5+1AA Alfonso Femia, Gianluca Peluffo arranges the buildings around the edges of the space, marking out an urban park divided into three theme zones: trees, playground and waterpark.

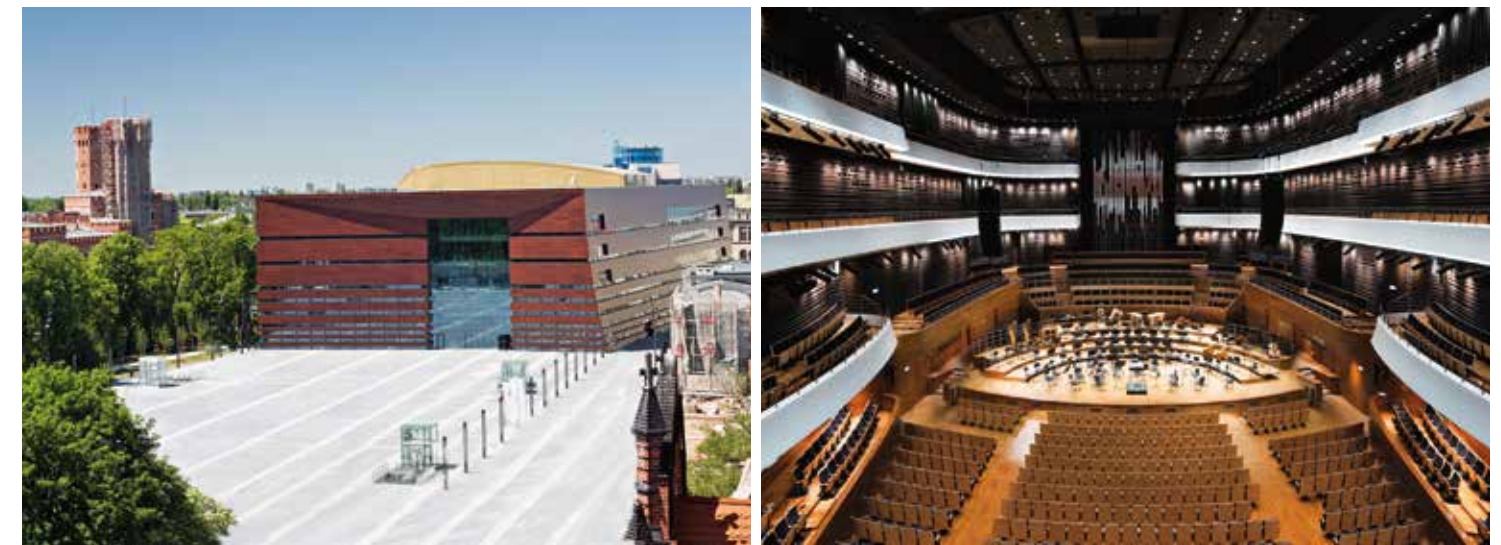
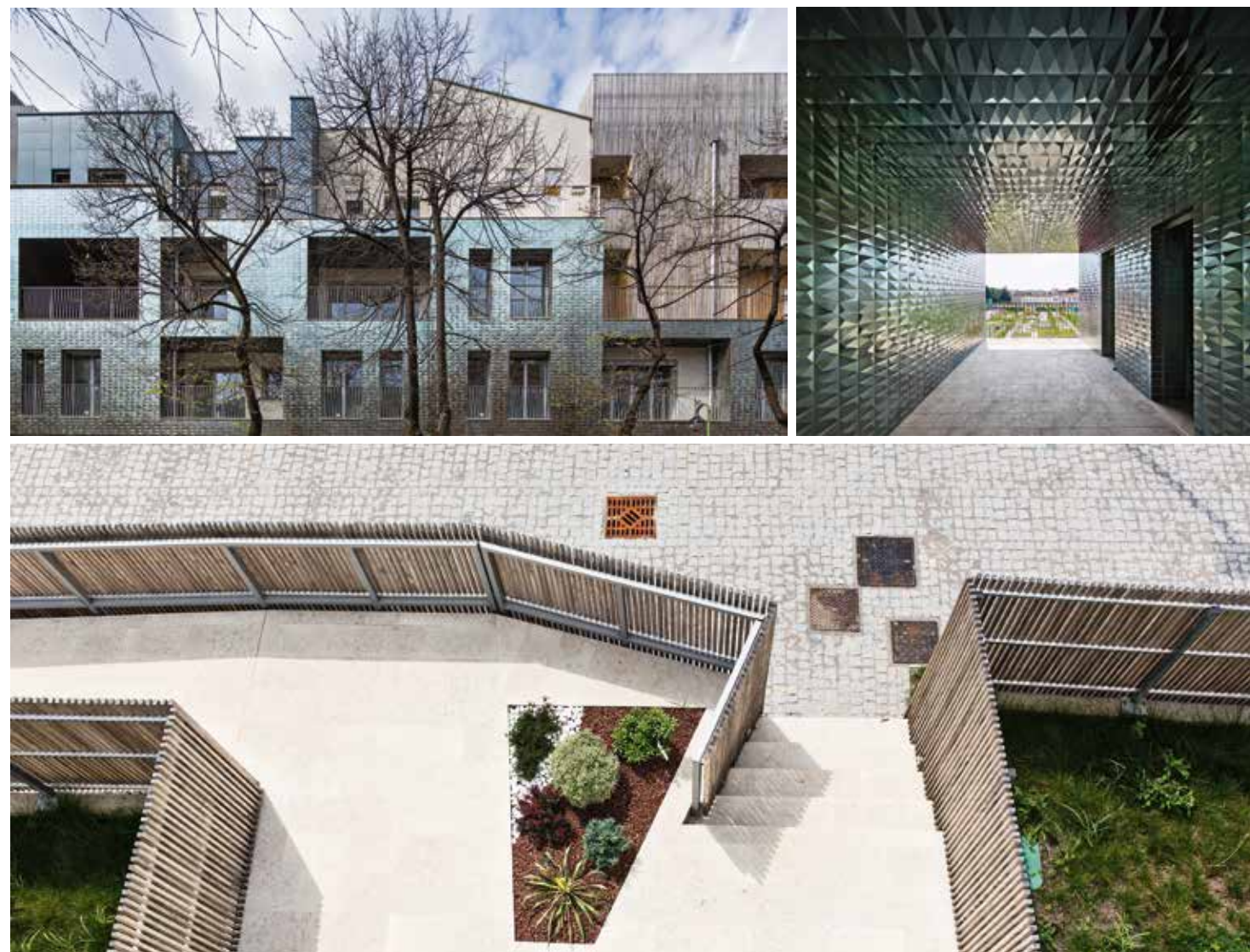
The latest technology, energy efficient materials, plentiful glazing and 2.90 m high ceilings all combine to produce excellent thermal, sound and light performance for these class-A apartments, ensuring living comfort.

The choices of claddings and finishings merge materials and colours to give an articulated, vibrant feel in which porcelain stoneware, wood, paint and fibre cement alternate to produce different material and light effects.

Marmi Faedo's Grolla marble was selected to pave the common areas, external walkways and apartment balconies, and for the windowsills, doorsteps and stair cladding. This true natural marble (98% calcium carbonate) is quarried in the Vicenza province in northern Italy and comes in a range of colour hues and finishes. In this case, Grolla Beige in two finishes was selected: acid-etched for the floors and external steps; brushed for the internal stairs, doorsteps and sills.

The technical and mechanical properties of this material allow it to be used in areas where the temperature drops well below zero. Grolla marble is resistant to pollution in damp conditions and salt crystallisation.

Photography by Luc Boegly, courtesy of 5+1AA



Photography by Łukasz Rajchert, courtesy of Narodowe Forum Muzyki

NARODOWE FORUM MUZYKI AUDITORIUM

Wrocław, Poland

KURYŁOWICZ & ASSOCIATES ARCHITECTURE

Narodowe Forum Muzyki is a cultural and musical institution located in Wrocław. The complex, designed by Kuryłowicz & Associates Architecture, lies only a short walk from the centre. It has four concert halls, a recording studio, practice rooms, conference rooms and offices, an exhibition area, restaurants, a music shop and areas for local associations. The building sits opposite the historic Wrocław Opera house on Wolności Square, creating in an architectural style that draws dynamically on museums, religious buildings and institutional structures. The brownish-red exterior cladding is made of wooden panels from ProdeMa's ProdEX range, picking up on the traditional colour of brickwork while also hinting at the hues and materials often used for musical instruments. The panels are in a 2,440x610 m horizontal pattern to vaguely mimic a brick wall, while the combination of closed (of

increasing thickness towards the top) and glazed bands adds dynamism and lightness. At the top, a section clad in panels in a gilded aluminium colour is a double allusion to the architecture of domes and brass instruments. The design for the interior focused on achieving the highest acoustic standards and making sure plenty of use could be made of the concert halls by allowing them to be reconfigured to meet the demands and size requirements of differing orchestras. Narodowe Forum Muzyki adds a key venue in the city landscape and a vital place for the many associations based there. Yet, it is also a contemporary building in which architecture and music merge, and the structure interacts dynamically with the surrounding urban context.

PRODEMA

B° San Miguel, s/n - S - 20250 Legorreta - Gipuzkoa
Tel. +34 943 80700 - Fax +34 943 807130
E-mail: prodema@prodema.com - www.prodema.com

PRODEMA ITALIA

Strada Anziani, 7 - I - 14055 - Costigliole d'Asti (AT)
Tel. +39 0141 961644 - Fax +39 0141 962621
E-mail: pavanellorepresentanze@gmail.com - www.prodema.com

